

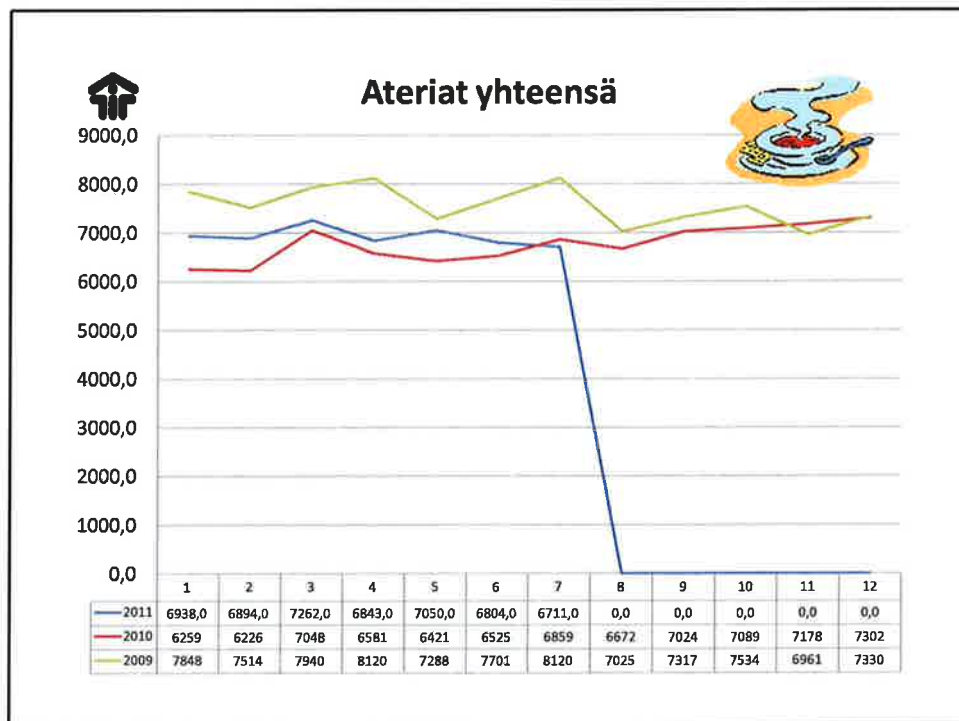
Toiminnallinen ja  
taloudellinen katsaus

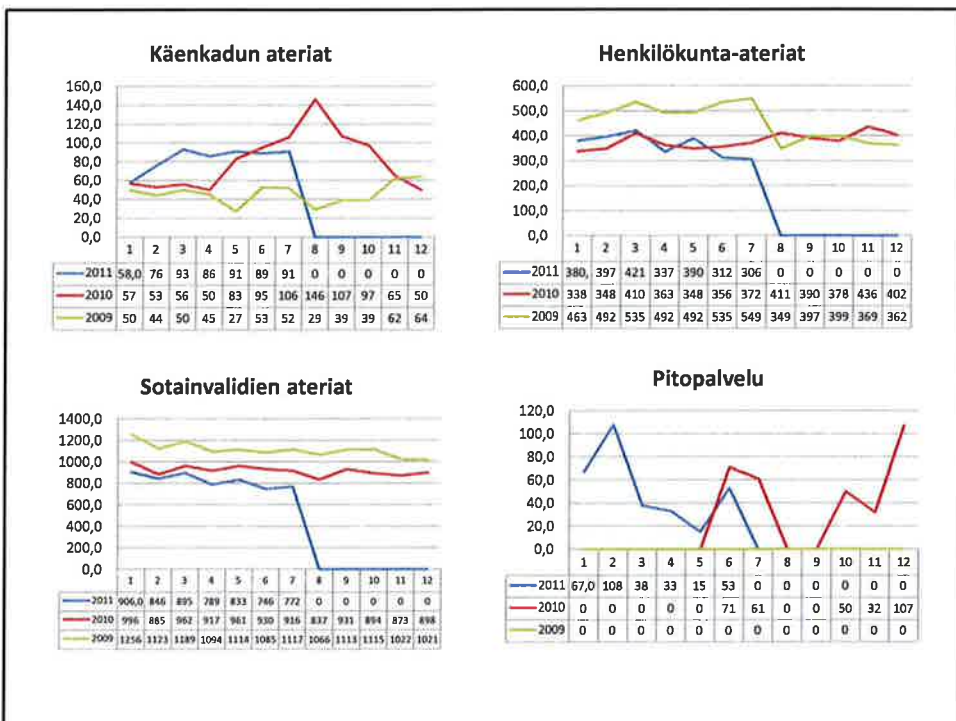
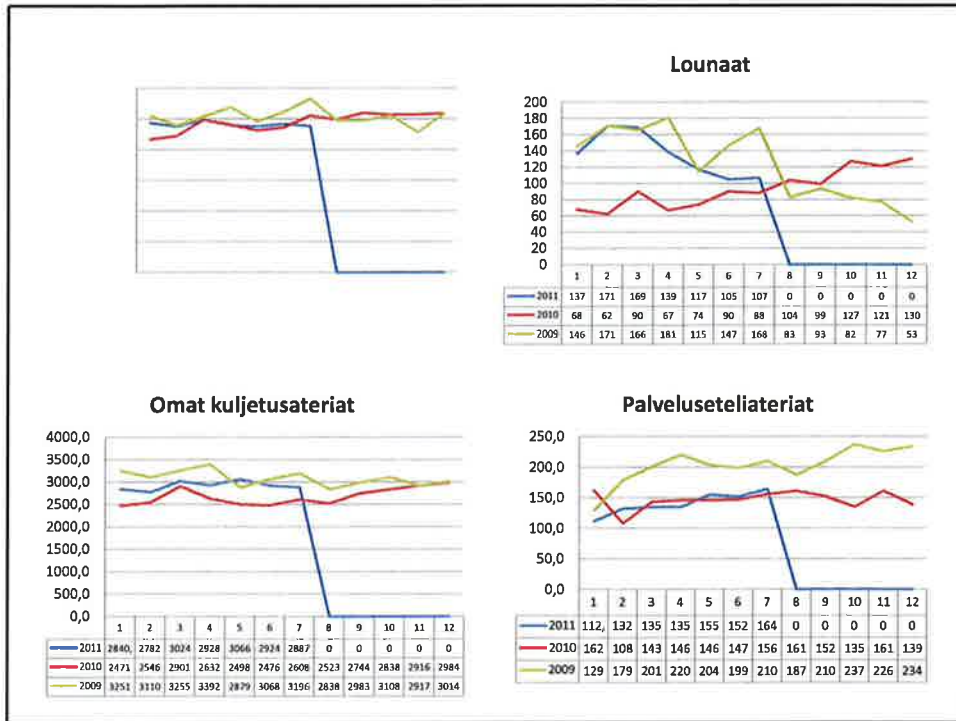
liitteet

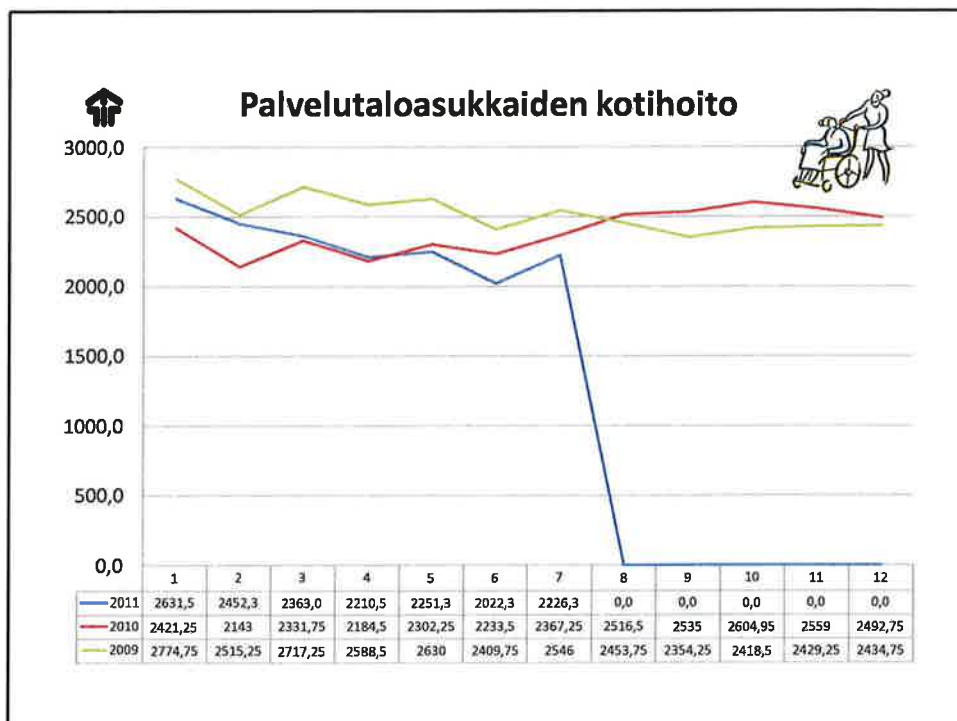
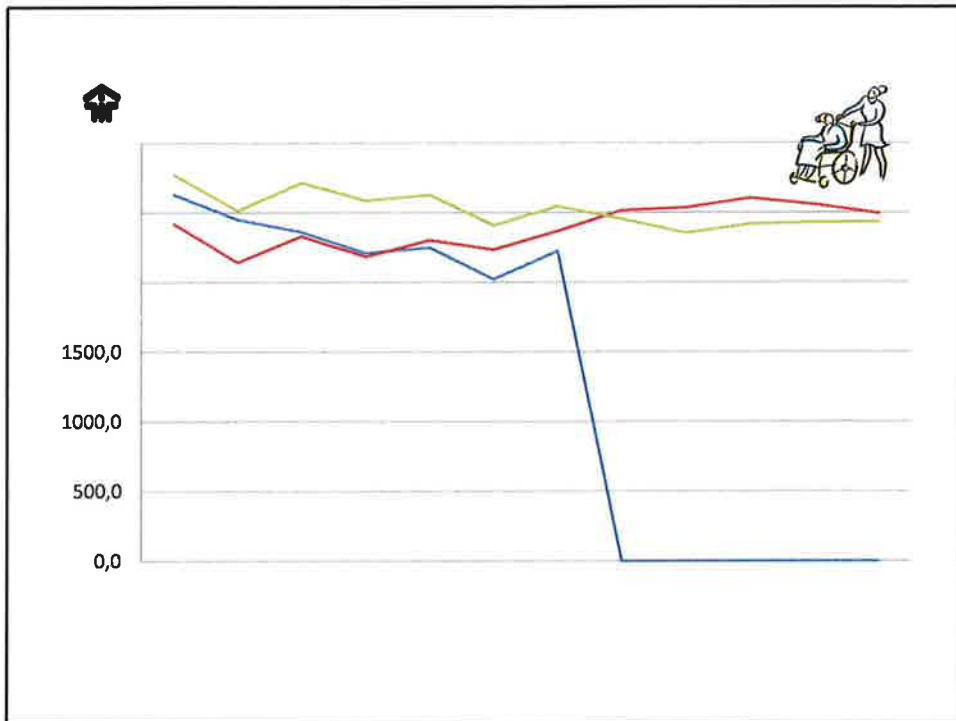
21-22

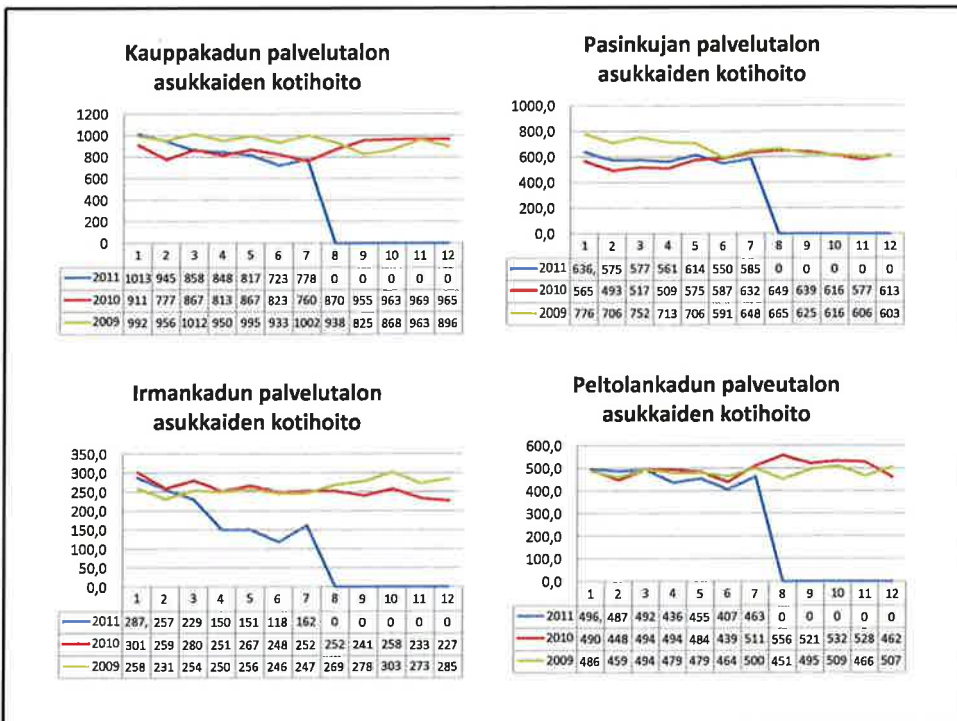
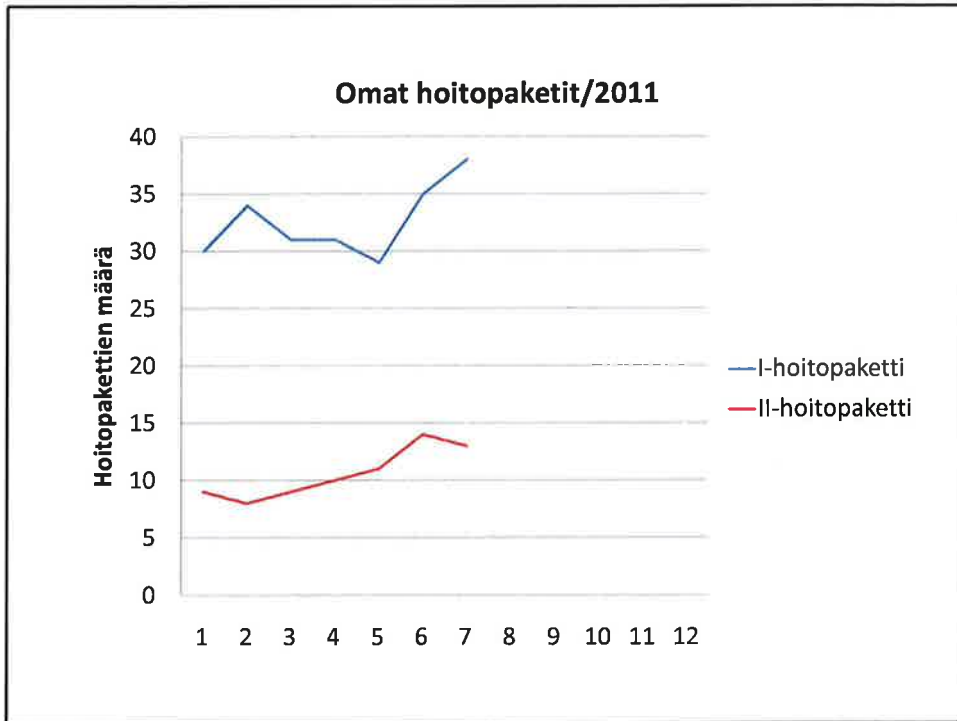
# TUKIPALVELUT

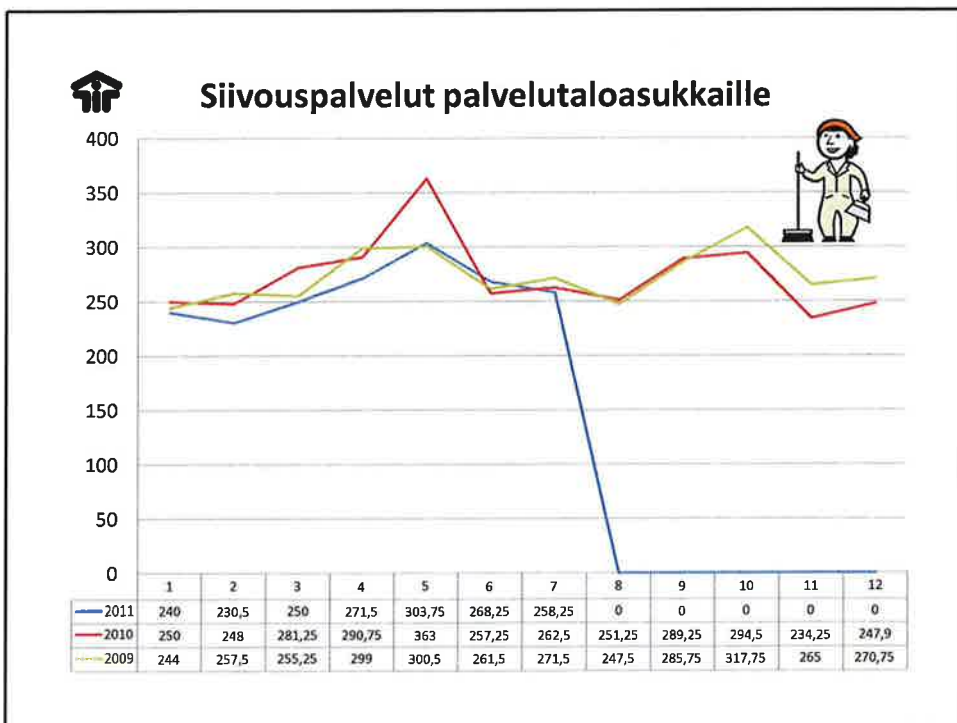
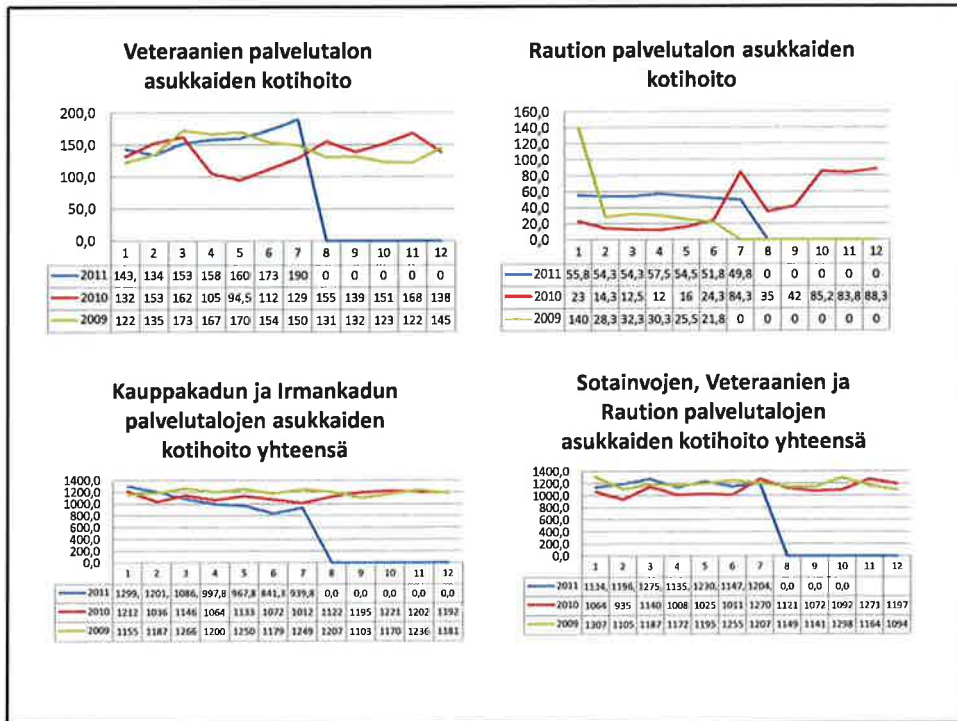
## HEINÄKUUN 2011

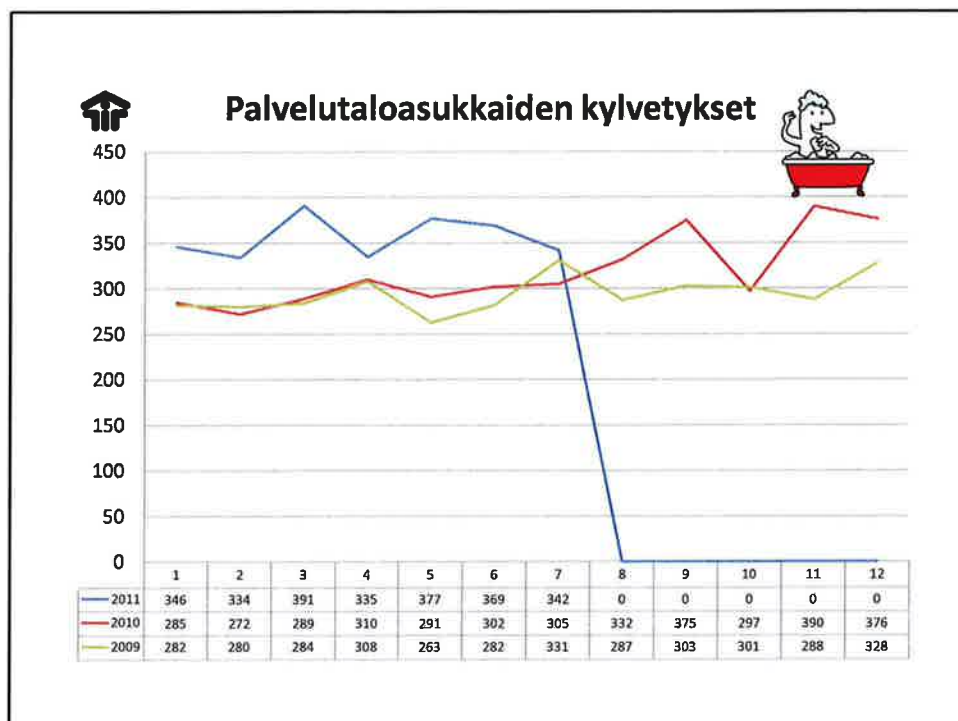
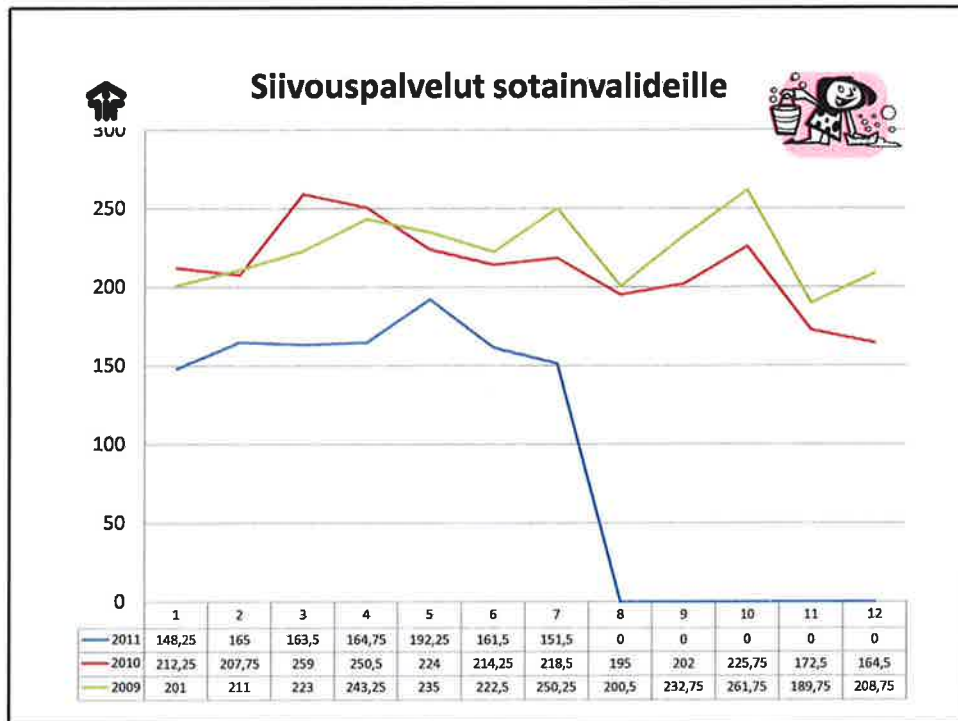


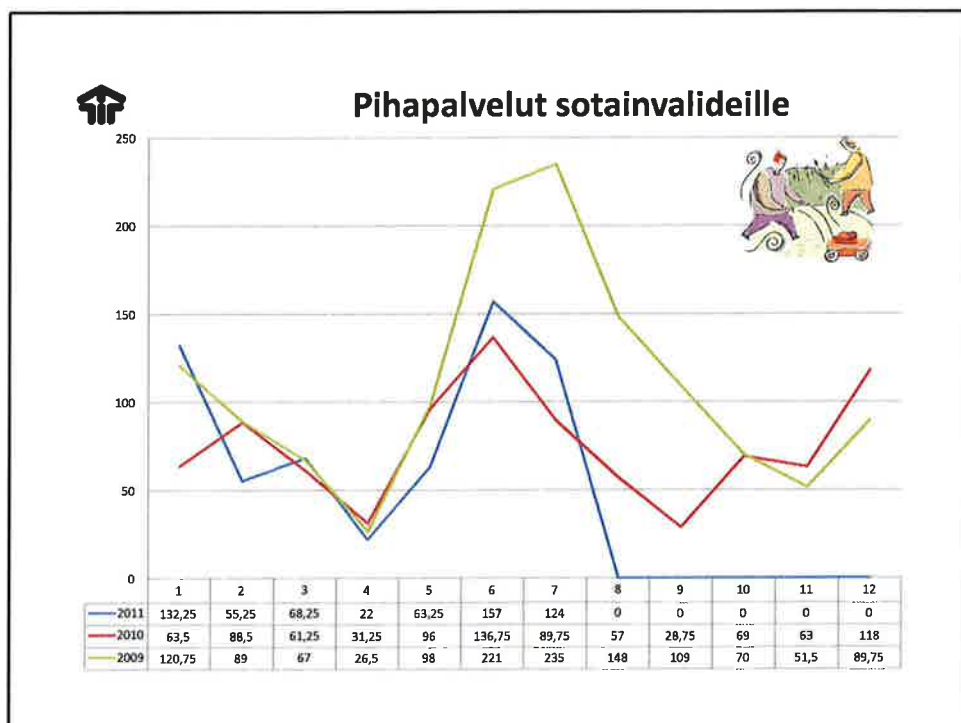
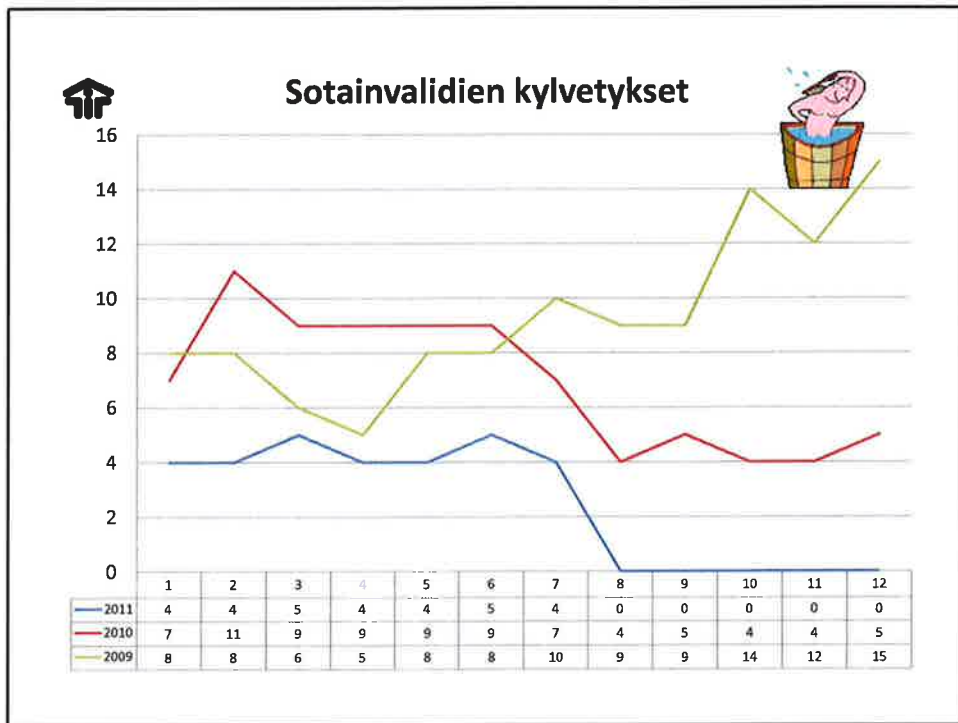




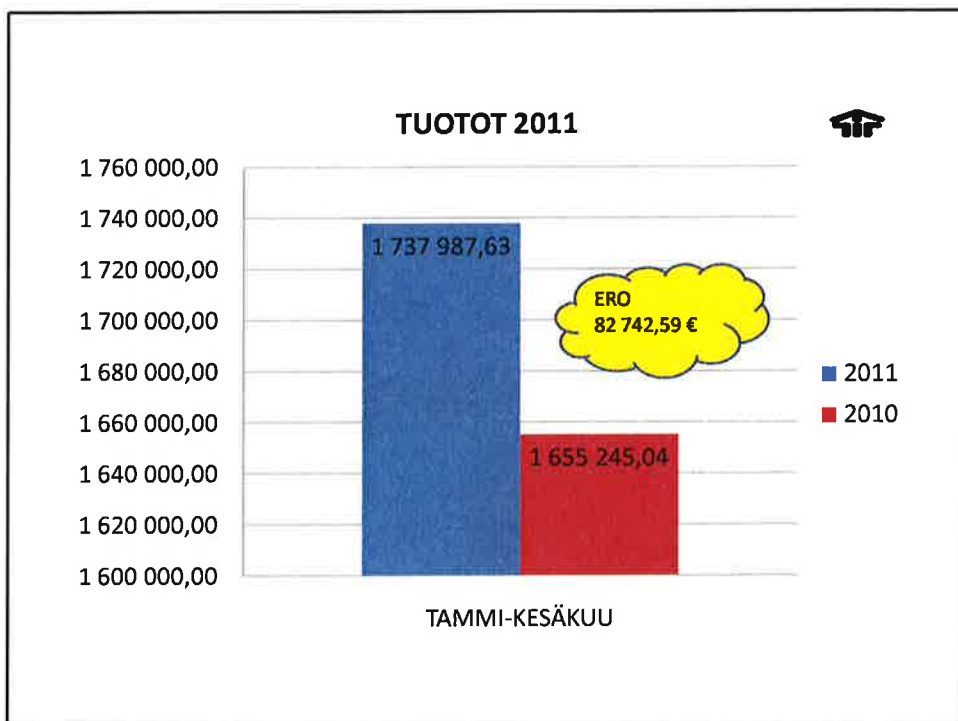
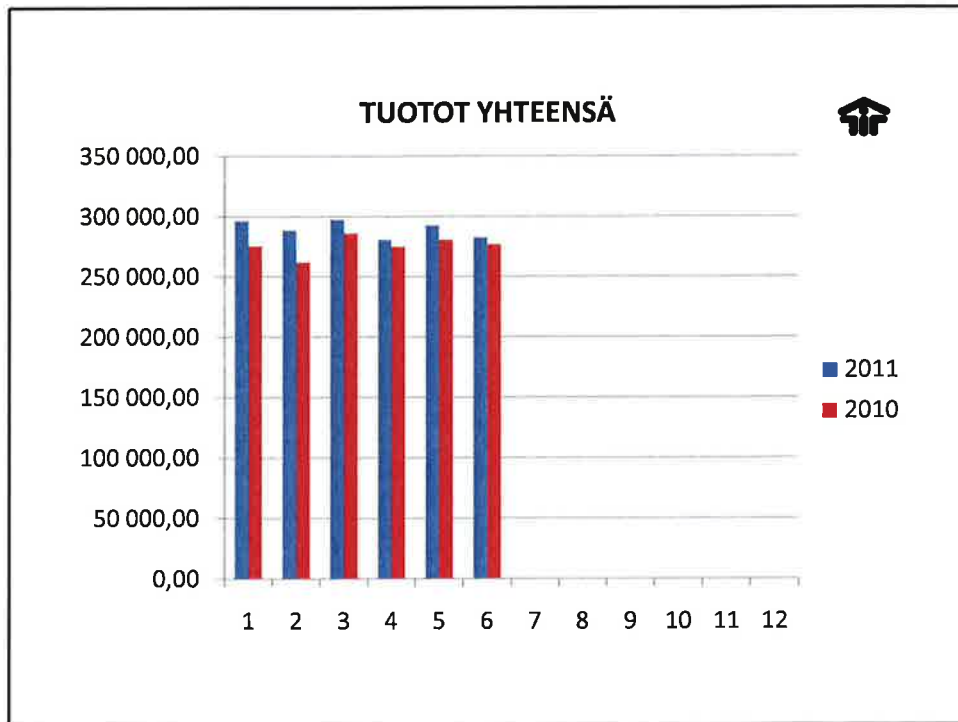


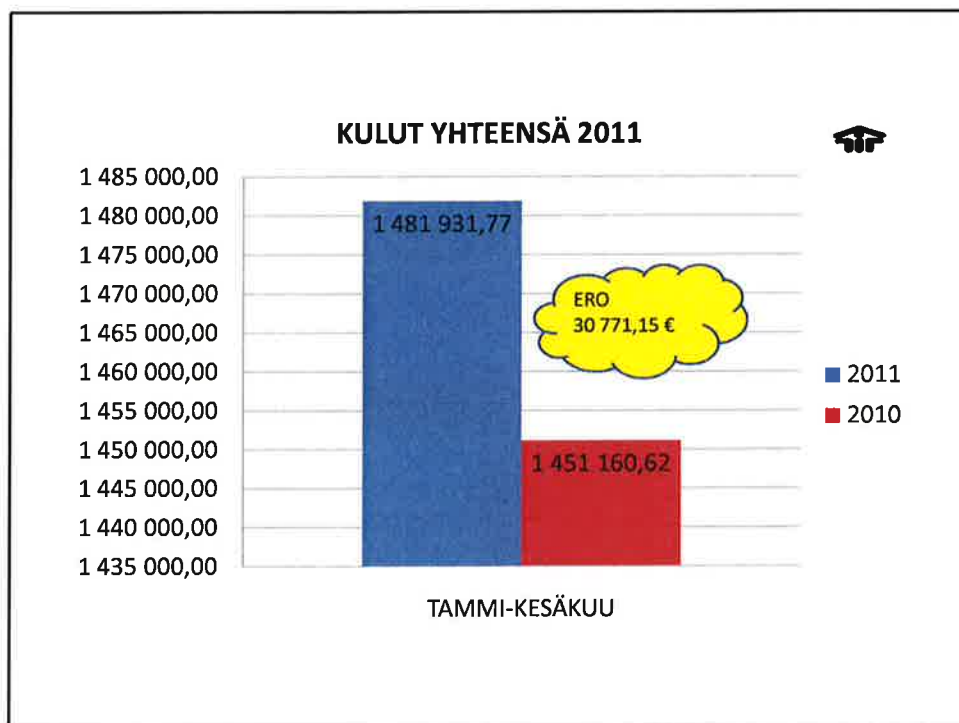
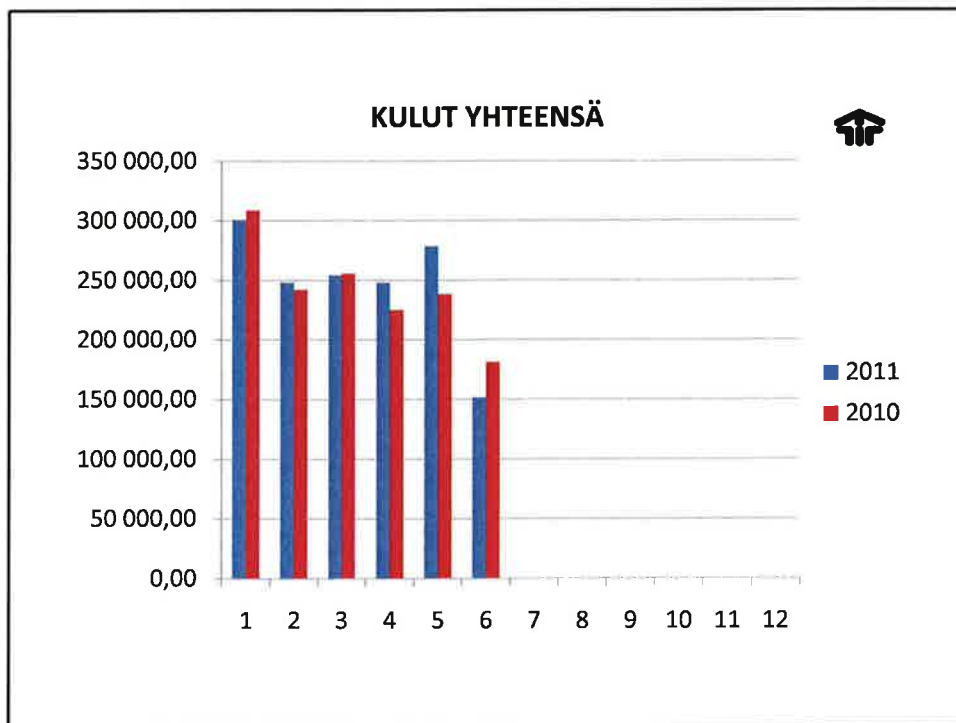


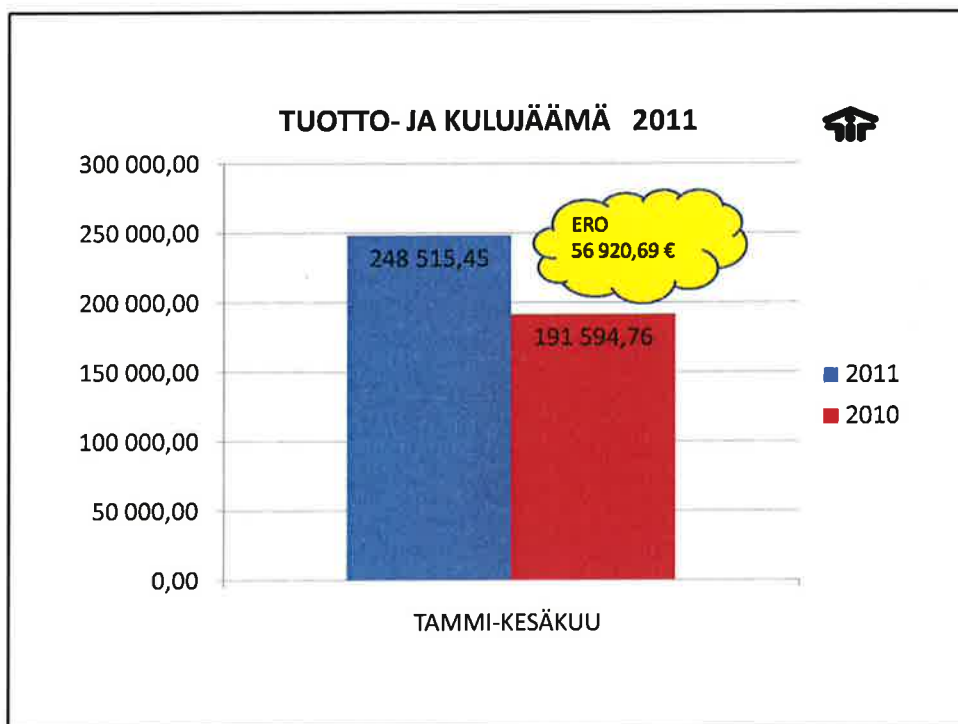
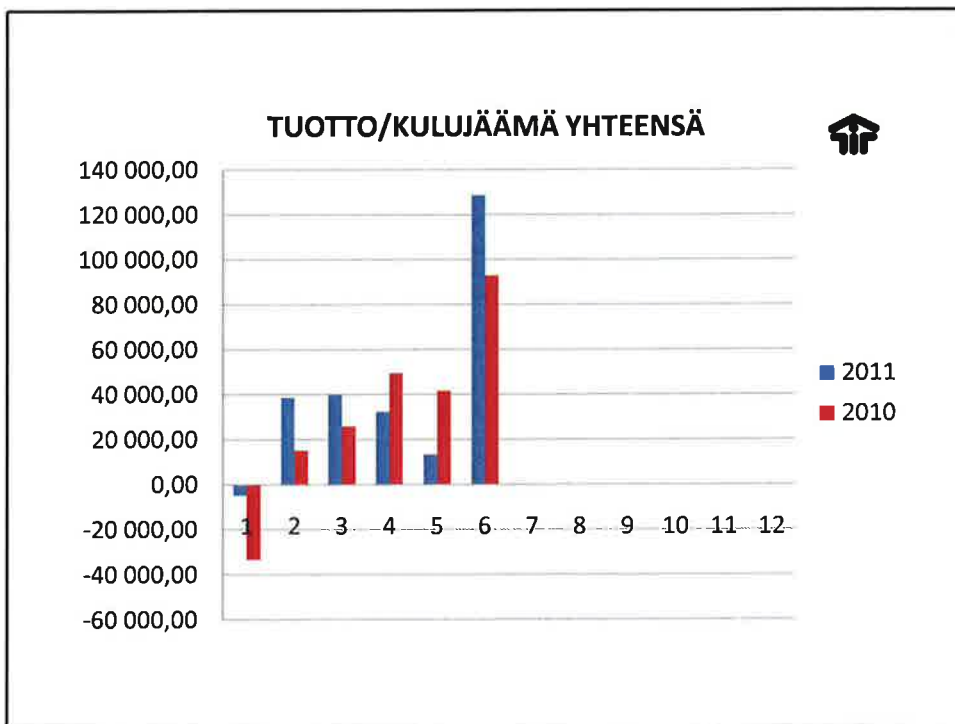












IMATRAN PALVELUTALOYHDISTYS RY				1.1.-30.06.2011						
	Kiinteistöt		Palvelutoiminta		Muu varsinainen toiminta		Yhteensä		Ero	
	2011	2010	2011	2010	2011	2010	2011	2010	€	%
<b>Tuotot</b>	568 756,68	553 246,30	1 140 214,39	1 078 550,50	29 016,56	23 448,24	1 737 987,63	1 655 245,04	82 742,59	5,0
Henkilöstökulut	90 777,77	104 454,73	774 888,85	729 725,39			865 666,62	834 180,12	31 486,50	3,8
Poistot										
Muut kulut	282 680,70	293 461,02	324 912,67	315 195,08	8 671,78	8 324,40	616 265,15	616 980,50	-715,35	-0,1
<b>Kulut yhteensä</b>	373 458,47	397 915,75	1 099 801,52	1 044 920,47	8 671,78	8 324,40	1 481 931,77	1 451 160,62	30 771,15	3,7
<b>Tuotto- /kulujäämä</b>	195 298,21	155 330,55	40 412,87	33 630,03	20 344,78	15 123,84	256 055,86	204 084,42	51 971,44	25,5
Tuotot								25,00		
<b>Tuotto- /kulujäämä</b>	195 298,21	155 330,55	40 412,87	33 630,03	20 344,78	15 123,84	256 055,86	204 109,42	51 946,44	25,5
Sijoitus- ja rahoitustoiminta										
Tuotot										
Kulut							7 540,41	12 514,66	-4 974,25	-39,7
<b>Tuotto- /kulujäämä</b>							248 515,45	191 594,76	56 920,69	29,7